



MAYOR'S OFFICE OF
Sustainability
CITY OF PHILADELPHIA
LIFE • LIBERTY • AND YOU™



Climate Change Adaptation A Framework for the City of Philadelphia

Chastain C., Ferguson J., Gudernatch S., Kondracki E, Levy J., Tran L.

Agenda

- Adaptation Planning Framework
- Benchmarking
- Recommendations
- Project Challenges
- The Path Forward for Philadelphia

Client & Project Description

Client:

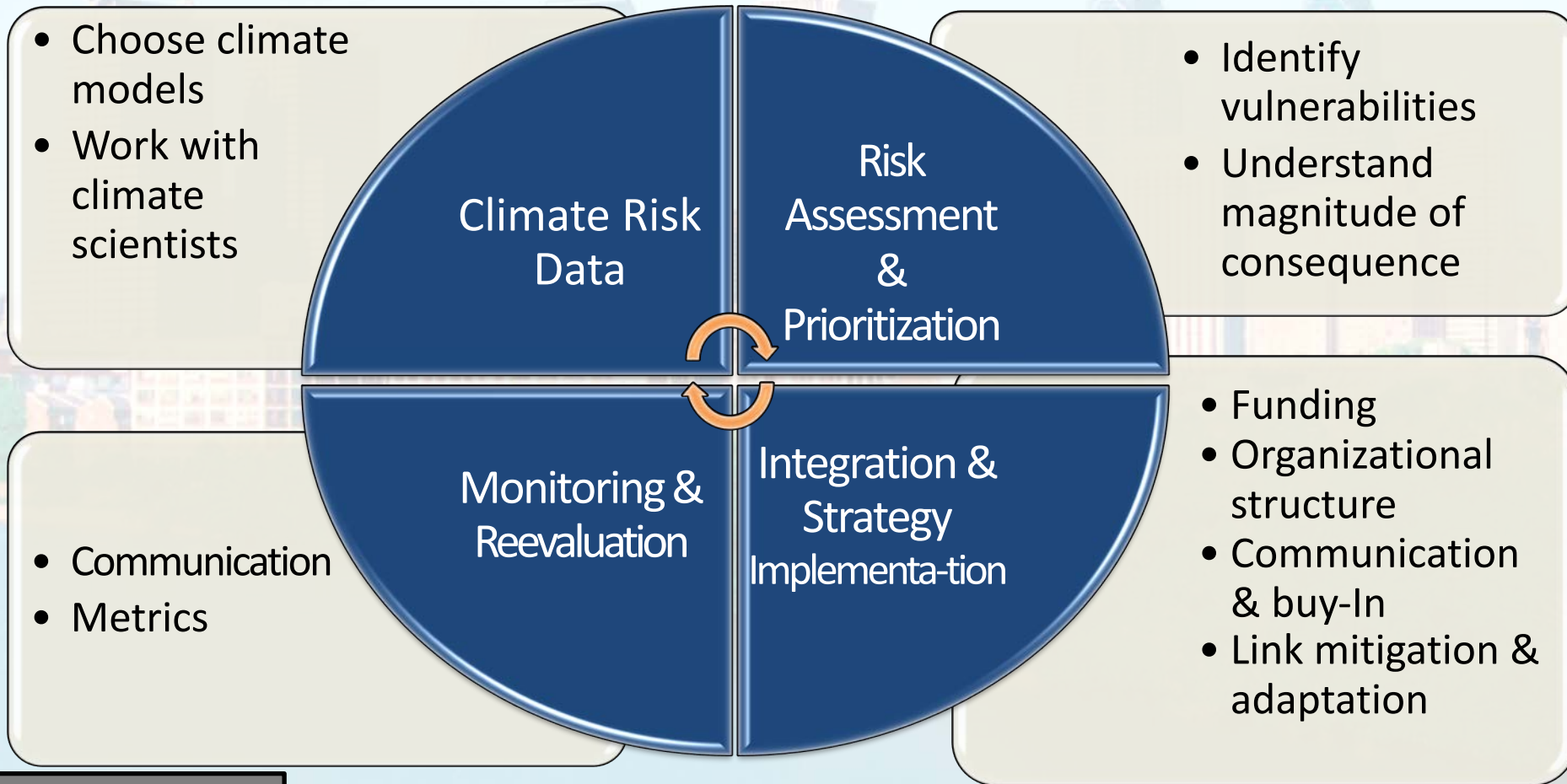
Mayor's Office of Sustainability – Philadelphia

Project Objectives:

- A planning primer to deal with climate risks
- Identify best practices from leading cities
- Provide a framework for adaptation planning

An Interconnected Framework

The Adaptation Planning Process for the City of Philadelphia



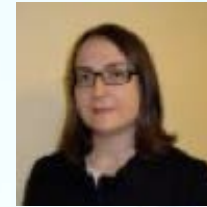
**Adaptation
Framework**

Benchmarking

Recommendations

Project
Challenges

The Path
Forward For
Philadelphia



Finding Best Practices



CITY OF MELBOURNE



City of Fort Collins



Union of Concerned Scientists



INSTITUTE FOR Sustainable Communities



King County



GREATER LONDON AUTHORITY

Adaptation Framework

Benchmarking

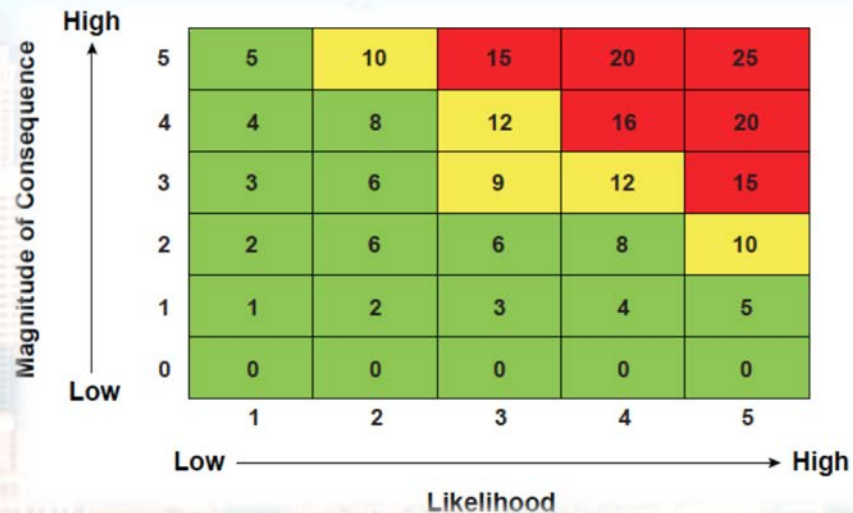
Recommendations

Project Challenges

The Path Forward For Philadelphia

Best Practices: Climate Data & Risk Assessment

- 1. Cities utilize local or regional climate models
- 1. Establish relationships with climate scientists early
- 1. Prioritize risks based on probability, magnitude and timing



Key finding: Cities must learn to work with uncertainty

Adaptation Framework

Benchmarking

Recommendations

Project Challenges

The Path Forward For Philadelphia

Best Practices: Securing Financing

1. Take a multifaceted approach

- Federal and state grants and loans
- Philanthropic groups
- Public/private partnerships

2. Fund adaptation plan components individually

3. Establish regional partnerships

4. Revise codes, regulations, design standards

Key finding: Emphasize the link between mitigation and adaptation to widen the opportunities

Adaptation
Framework

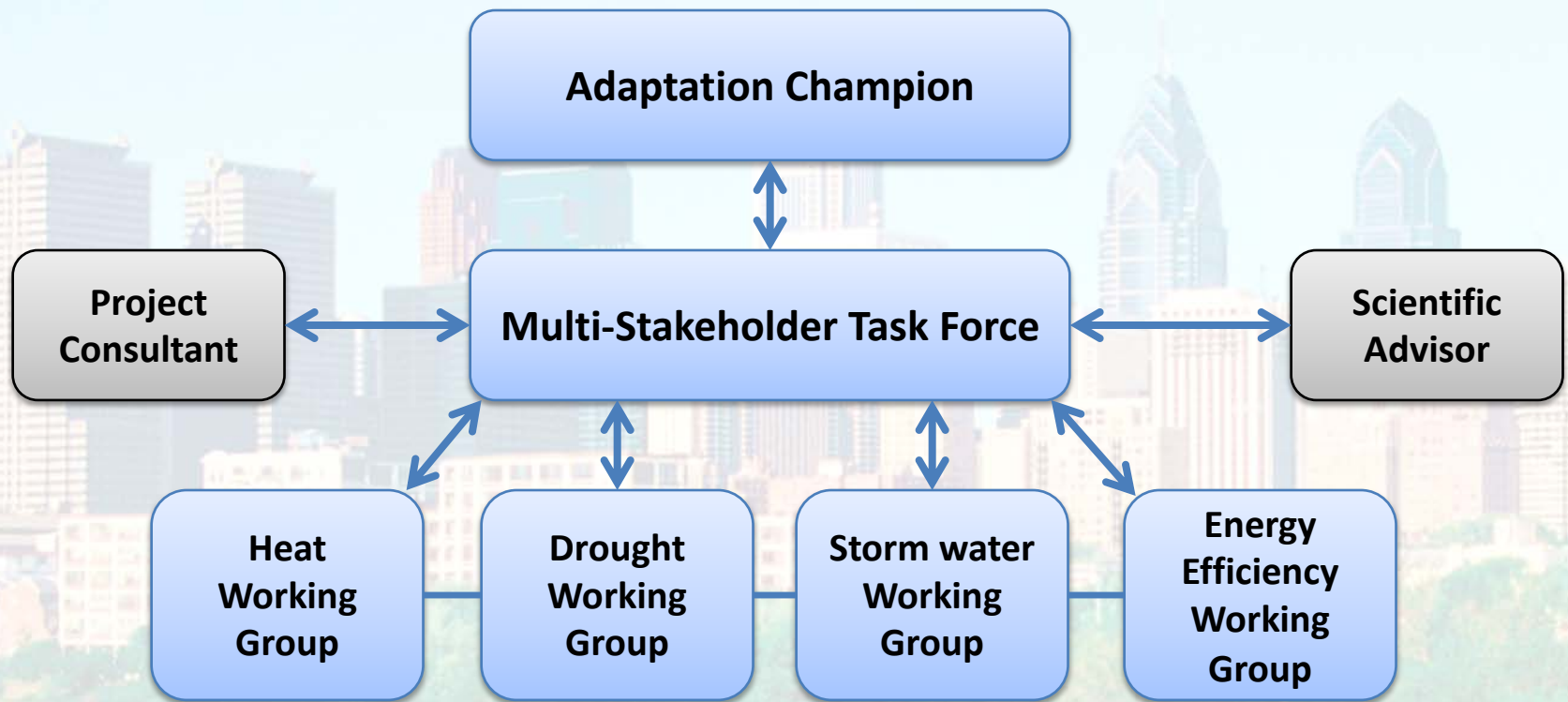
Benchmarking

Recommendations

Project
Challenges

The Path Forward
For
Philadelphia

Best Practices: Organizational Structure



Key finding: Collaborate within the City and engage outside stakeholders early

Best Practices: Communication and Buy-in

1. Recognize there are differing views on climate change
1. Tailor messaging to combat misconceptions
 - Make it real
 - Use the right words, avoid jargon
2. Engage stakeholders
 - Get city agencies on board
 - Make citizens active participants



Key finding: Effective communication strategies are as important as adaptation strategies themselves!

Adaptation
Framework

Benchmarking

Recommendations

Project
Challenges

The Path Forward
For
Philadelphia

Best Practices: Integrating Adaptation Planning

1. **Involve city agencies early**
2. **Create internal process upfront**
3. **Stay flexible** as process will evolve when new data is available
4. **Incorporate climate change** into planning process & capital plans

Key finding: Weave climate change into each City Department, each process, and into operations and planning.

Adaptation
Framework

Benchmarking

Recommendations

Project
Challenges

The Path Forward
For
Philadelphia

Best Practices: Monitoring and re-evaluation

1. Define indicators to measure outcomes

- Evaluate strategy effectiveness

2. Utilize relevant new data



Key finding: Create a feedback loop for ongoing adjustments to adaptation strategies

Adaptation
Framework

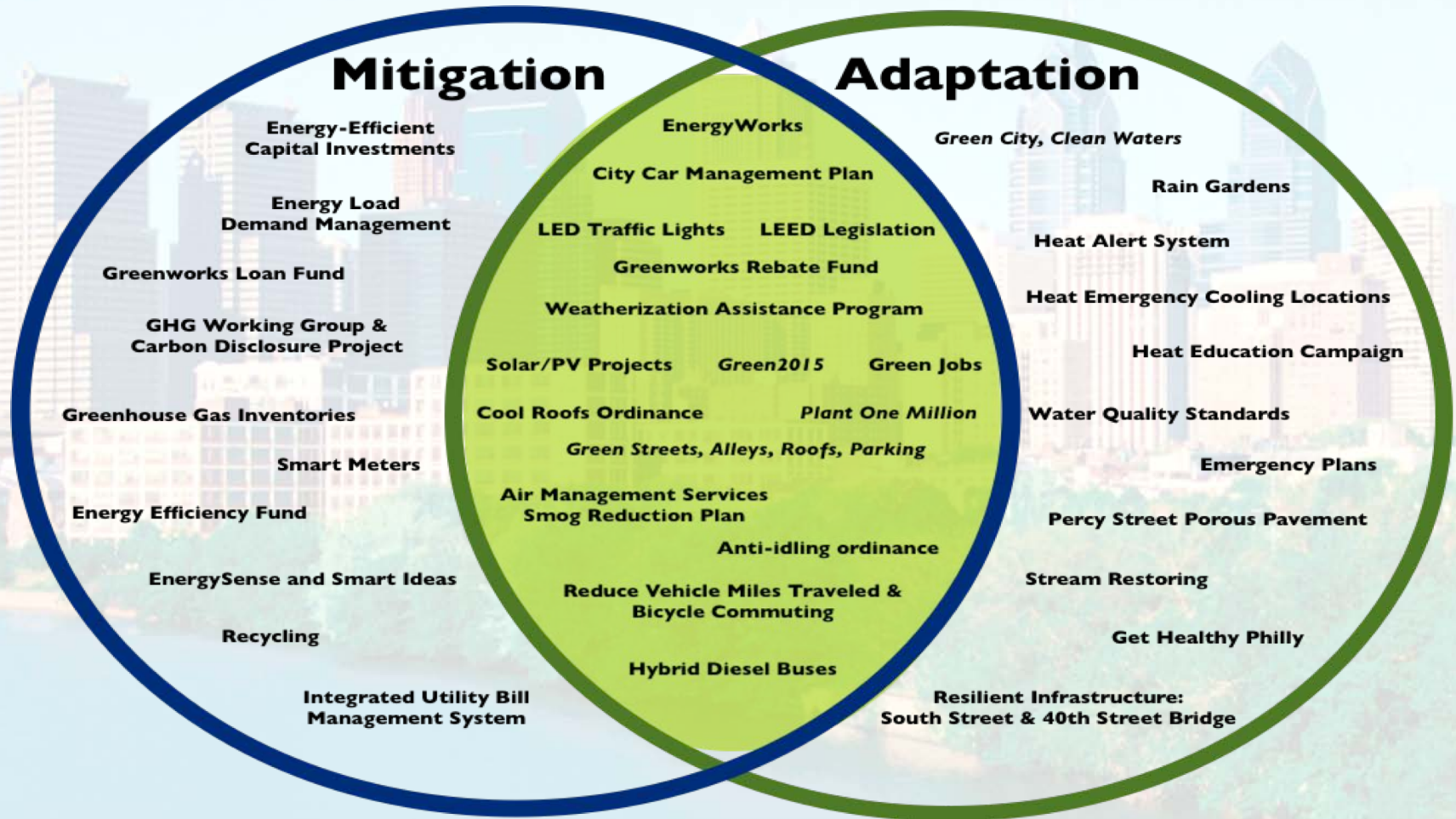
Benchmarking

Recommendations

Project
Challenges

The Path Forward
For
Philadelphia

Current strategies in Philadelphia



Adaptation Framework

Benchmarking

Recommendations

Project Challenges

The Path Forward For Philadelphia

Project Challenges

1. Challenges

- Large scope of work
- Abundant information that sometimes conflicted
- Uncertainty about the effectiveness of some approaches

2. Solutions

- Extensive review of approaches
- Interviews from leading practitioners & subject matter experts
- Ranked information based on Philadelphia's specificity
- Present options and describe pros/cons of each approach

Adaptation
Framework

Benchmarking

Recommendations

**Project
Challenges**

The Path Forward
For
Philadelphia

The Path Forward for Philadelphia

Next Steps for the Client:

1. Share feedback on memo that was distributed regarding our project
2. Prepare agencies to read findings & think about adaptation planning
3. Use project outcome to develop an adaptation process

Next steps for the Group:

1. Final client briefing scheduled: December 9, 2011
 - Mayor's Office of Sustainability staff
 - Select members of other agencies

Adaptation
Framework

Benchmarking

Recommendations

Project
Challenges

The Path
Forward for
Philadelphia



MAYOR'S OFFICE OF
Sustainability
CITY OF PHILADELPHIA
LIFE • LIBERTY • AND YOU™



Climate Change Adaptation A Framework for the City of Philadelphia

Questions?